



EXCEN-CRUSHER®

Clinker Grinder - Model 1370

United Conveyor Corporation (UCC) EXCEN-CRUSHER® Model 1370 is specifically designed for wet and dry bottom ash applications, offering superior performance and high-level reliability. With decades of proven experience, UCC crushers effectively reduce material size providing higher efficiency in pneumatic, hydraulic and mechanical bottom ash handling systems.

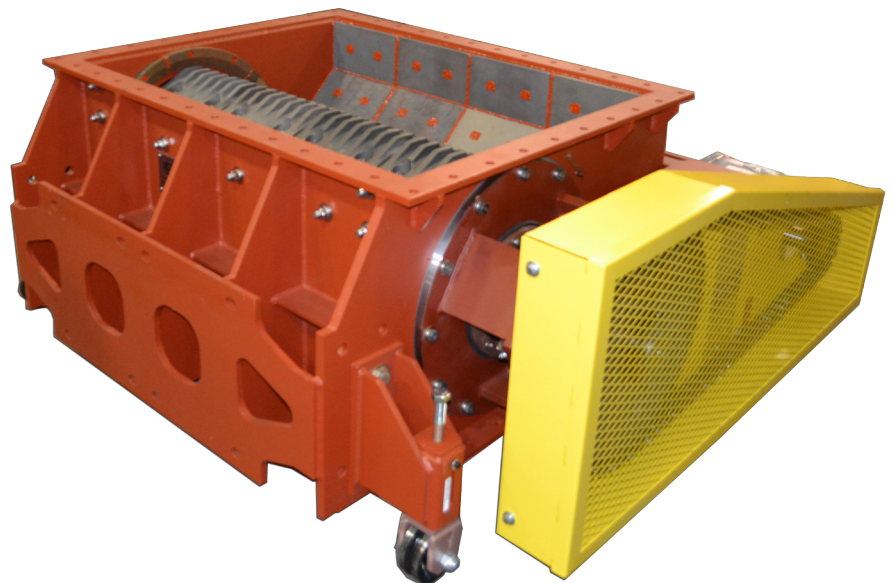
UCC crushers are installed worldwide in both UCC and other bottom ash systems. Working with UCC, utilities benefit from cost-effective rebuild and upgrade kits using the latest design improvements. The result is high performance and efficiency.

With thousands of units in service, UCC crushers are the industry standard for utility and industrial power plants across the world.

DURITE® H High Chrome
Wear Components



Durable Body
Design



APPLICATIONS

- Wet or Dry Bottom Ash Handling: 27 to 136 TPH Throughput Capacity
- Continuous or Intermittent Operation
- Large Inlet For Use at the End of a Drag Chain Conveyor
- High Temperature Applications up to 649 °C

KEY ADVANTAGES

- Cost-Effective Rebuild Kits
- Compact Single Roll Design
- Efficient Operation and Simple Maintenance
- Knowledgeable Field Staff

EXCEN-CRUSHER®

Clinker Grinder - Model 1370

ADVANTAGES

■ Superior Construction for Longer, Reliable Service

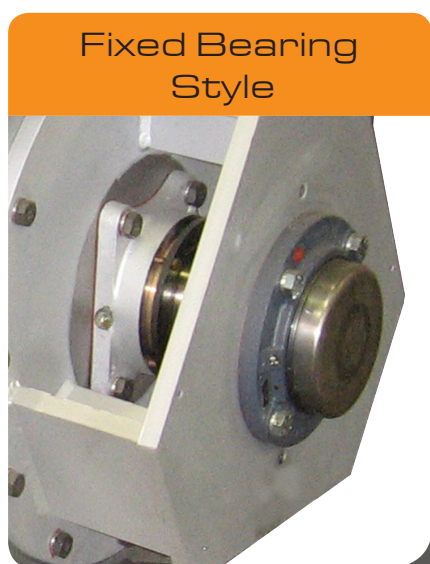
- › Rugged and reusable fabricated steel body and cam support are built to last multiple service intervals
- › Carbon or stainless steel bodies with optional side liner (body armor) for added wear protection
- › New 4-bolt DURITE® H (high chrome) cams are designed for severe-duty applications
- › Optional cast-in tungsten carbide cams available for the most extreme applications
- › Square profile teeth provide effective shearing and longer wear life

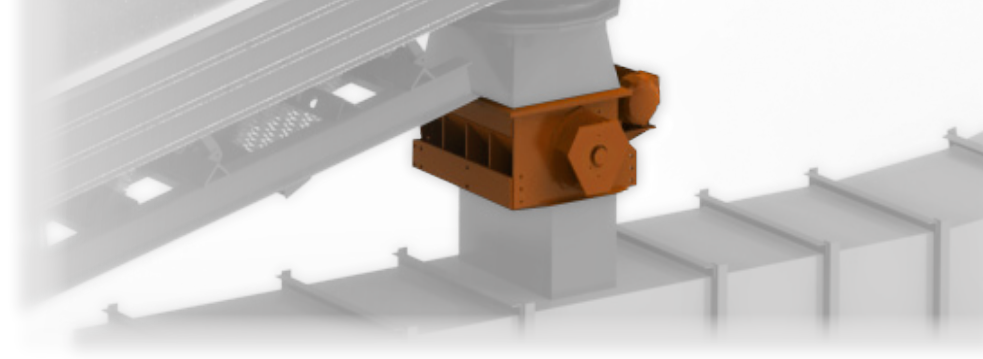
■ Optimal Sealing Performance

- › Superior performance of woven graphite packing in high-temperature, dry applications
- › Elastomer seal rings resist abrasion and wallowing in low-temperature, wet applications
- › Optional spring-loaded packing glands prevent leakage, minimize maintenance and increase reliability

■ Superior Seal Options

- › Fixed Bearing Style – UCC proven design includes woven graphite packing in dry/high-temperature applications and elastomer seal rings in wet/low-temperature applications
- › Floating Seal Style – In wet applications the flexible diaphragm allows the packing gland to “ride along” with the shaft as it deflects, ensuring a tight and leak-free seal





■ Efficient Operation

- › Single roll cam design produces more crushing force than a double roll design while reducing initial cost, rebuild cost and power consumption
- › 11 kW gearmotor is field proven to efficiently reduce the broadest range of friable materials
- › Standard drive design with flex coupling and control panel maximizes crushing torque

■ Simple Installation and Maintenance

- › Optional roll-out feature cuts down on installation and maintenance time and effort
- › Compact design and industry standard inlet/outlet/overall dimensions allow easy retrofit
- › Replaceable, hardened stainless steel shaft sleeves save on shaft repair/replacement costs
- › Optional auto-lube controller eliminates day-to-day maintenance and ensures sealing performance
- › UCC factory rebuild kits extend crusher life and increase return on investment

SPECIFICATIONS

Capacity (approx.)	27 to 136 TPH (dependent on ash type and size)
Input Particle Size (max.)	305 mm x 305 mm x 1219 mm
Discharge Particle Size (max.)	76 mm
Internal Temp (max.)	649 °C (dry) or 93 °C (wet)
Internal Pressure (max.)	1.38 Bar
Operating Speed	15 RPM
Drive Horsepower	11 kW
Standard Drive Mounting	Integral Gearmotor Mounting Bracket
Weight (approx.)	3039 kg (without drive) or 3765 kg (with drive)
Flange-to-Flange Height	813 mm
Inlet Opening	1378 mm x 1092 mm
Discharge Opening	1378 mm x 673 mm
Body Material	Primed Carbon Steel or Stainless Steel
Side Liner - Body Armor (<i>optional</i>)	Stainless Steel
Shaft Material	17-4PH Stainless Steel
Shaft Sleeve Material	Stainless Steel with Hard Coating (replaceable)
Cam Support Material	Primed Carbon Steel (standard) or Stainless Steel (optional)
Cam Material	DURITE H (standard) or Cast-in Tungsten Carbide (optional)
Anvil & Combing Plate Material	DURITE H

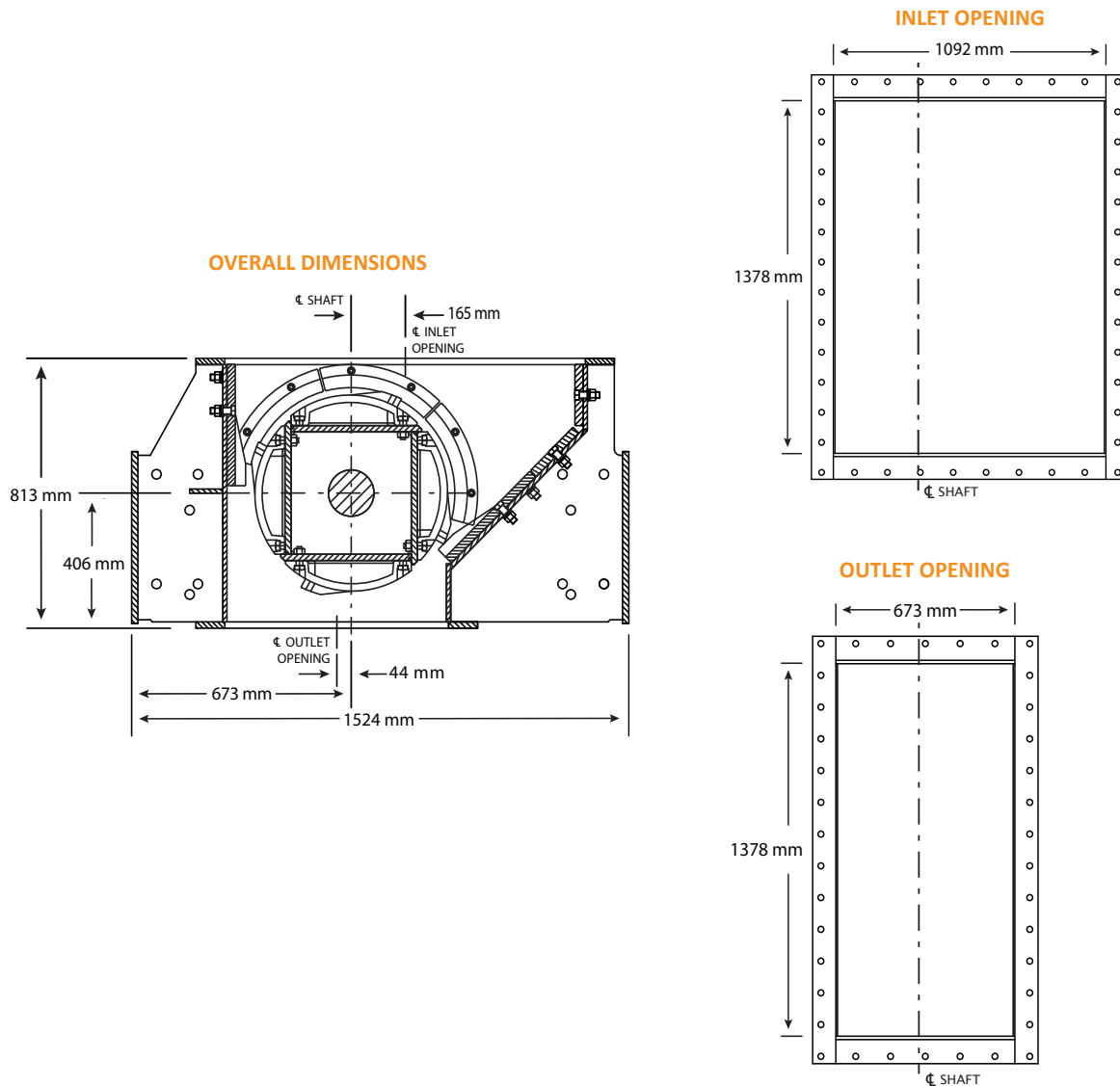
**DURITE H is 600 BHN Minimum*



EXCEN-CRUSHER®

Clinker Grinder - Model 1370

KEY DIMENSIONS



ORDERING INFORMATION

Crusher Type	Basic Assembly	Basic Assembly + Drive
Fixed Bearing Style	5-2106-23	5-2116-49
Floating Seal Style	Contact UCC	Contact UCC

* For current product information please reference drawings. For information on accessories, such as Auto-Reverse Controllers or Auto-Lube Controllers, please contact your local sales representative.

UNITED CONVEYOR CORPORATION

USA • GERMANY • INDIA • THAILAND • CHINA

contactucc@unitedconveyor.com

www.unitedconveyor.com

